

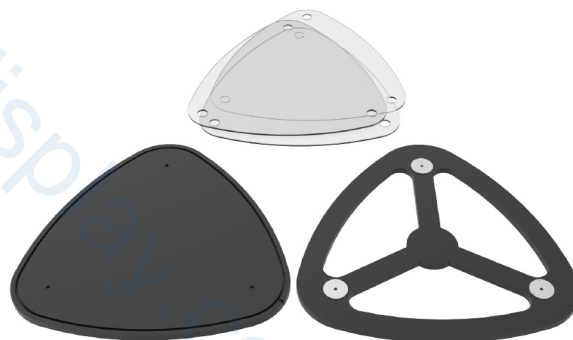
★ One Tool (Hex Wrench) 

STEPS

(1) Straight Support Poles



(2) Top MDF Board, Bottom MDF Board, Acrylic Boards

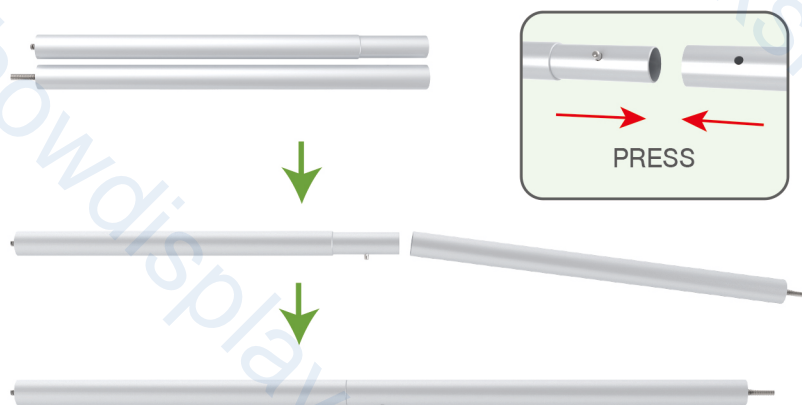


(3) Printed Graphic Fabric Banner



STEP 01

Connect straight support poles by pressing knobs to lock.

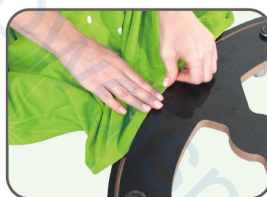


STEP 02

Insert fabric banner into bottom MDF board's slot and turn it over.



BOTTOM



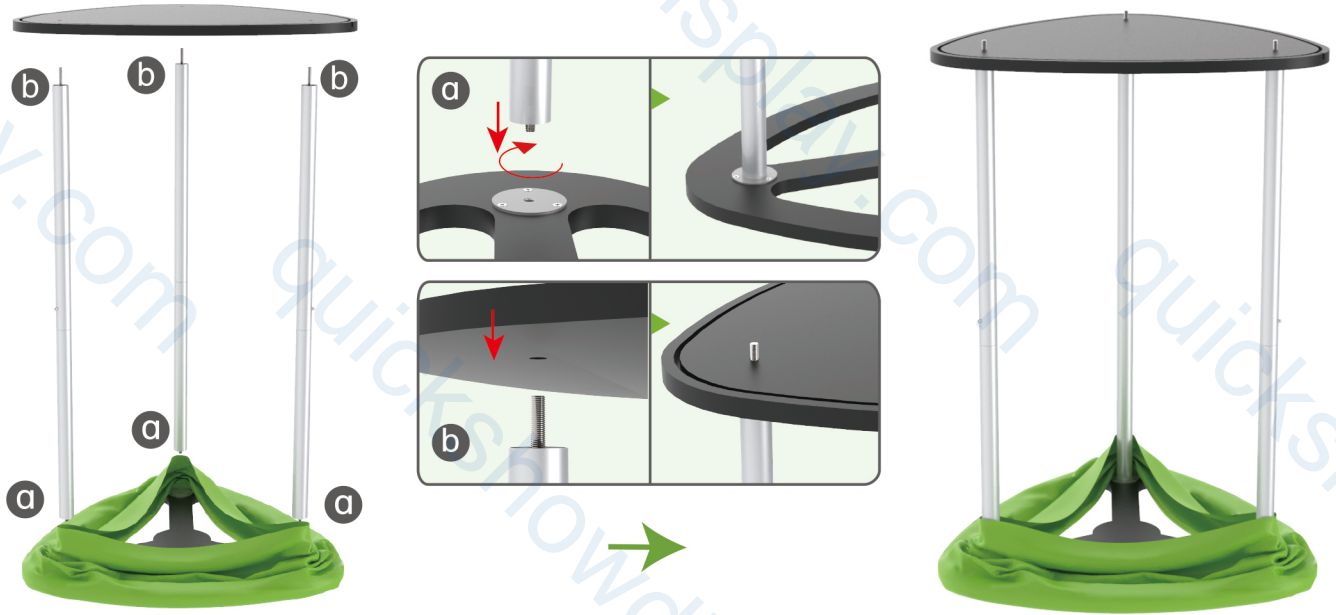
PRESS



STEPS

STEP 03

Screw straight support poles in bottom MDF board's threaded holes and place top MDF board on them.



STEP 04

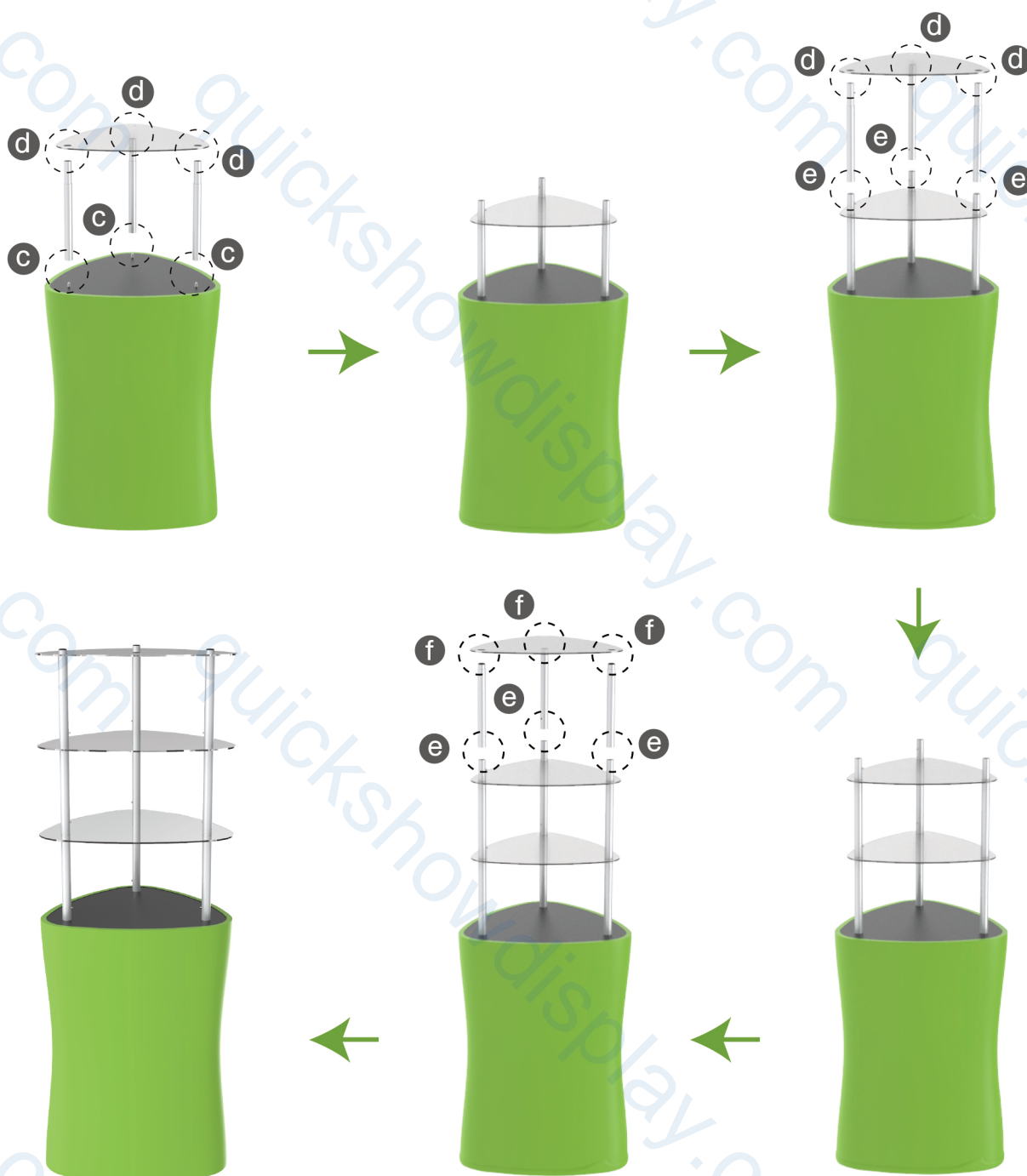
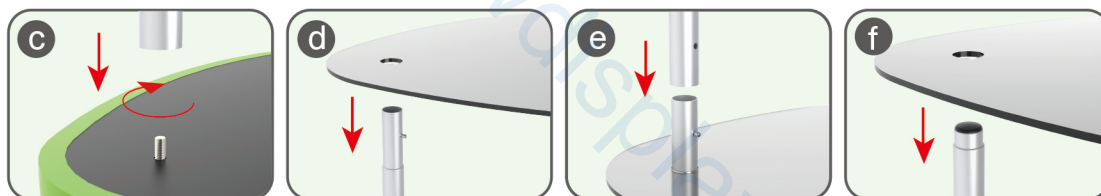
Pull fabric banner from bottom to top and insert into top MDF board's slot.



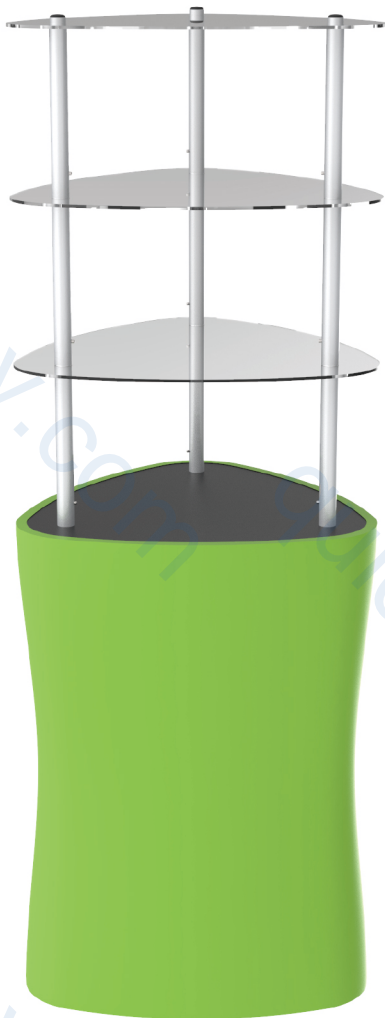
STEPS

STEP 05

Screw straight support poles with threaded holes filled onto nuts and place acrylic boards on them layer by layer.



STEPS



DT-S-02



DT-S-01



DT-S-03