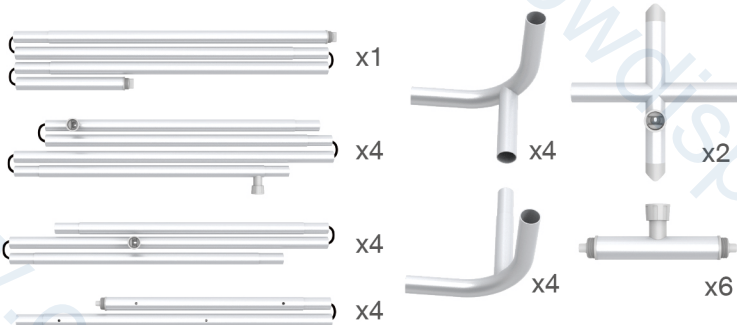


## STEPS

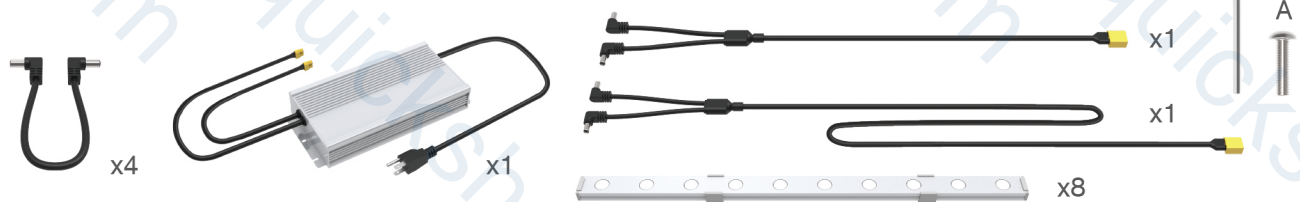
## (1) Hardware



## (2) Printed Graphic Fabric Banner (Optional)

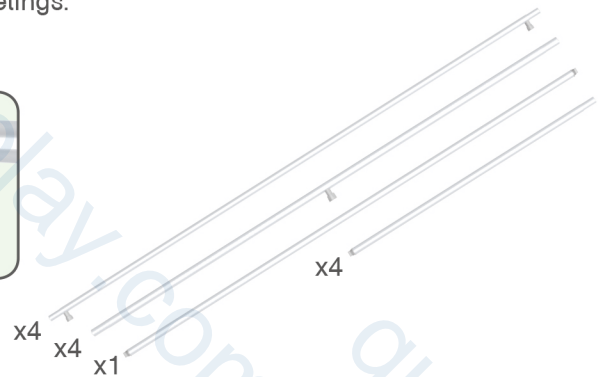
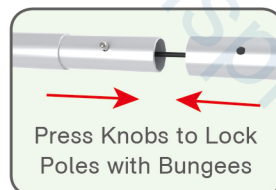


## (3) LED Light Bar, Switching Power Supply &amp; Connection Wire



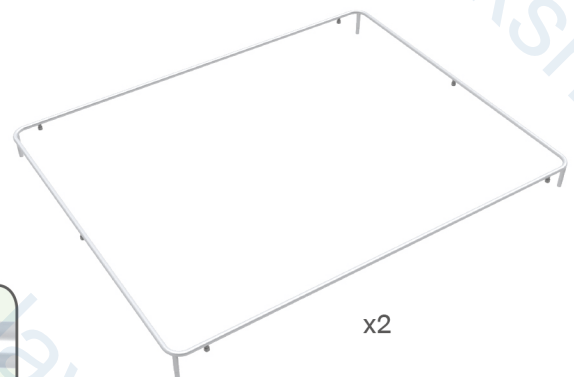
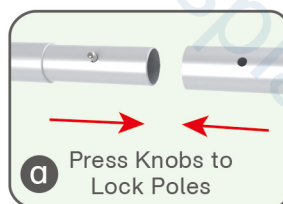
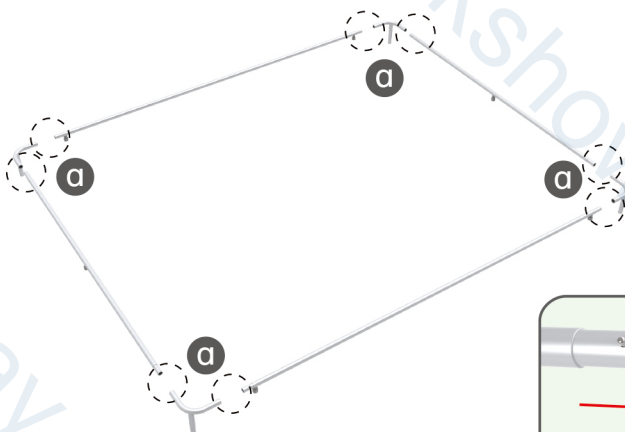
## STEP 01

Connect to make long poles according to labelings.



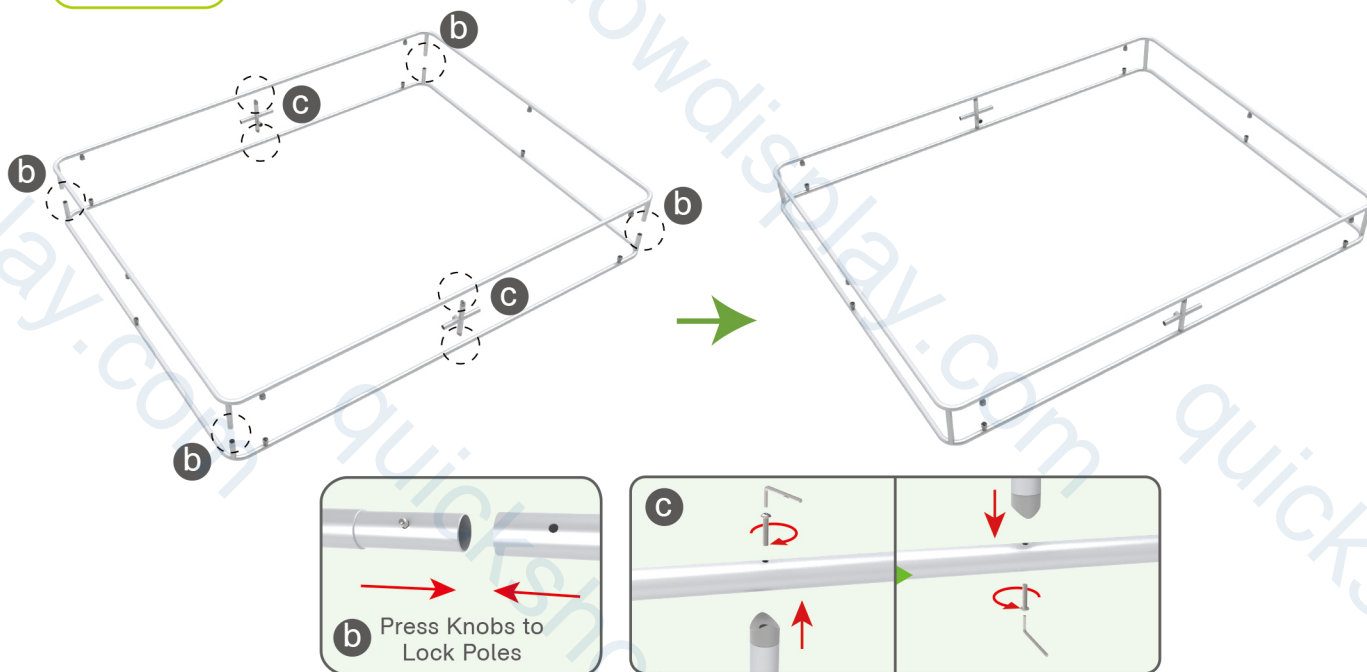
## STEP 02

Connect long poles with corner poles according to labelings.

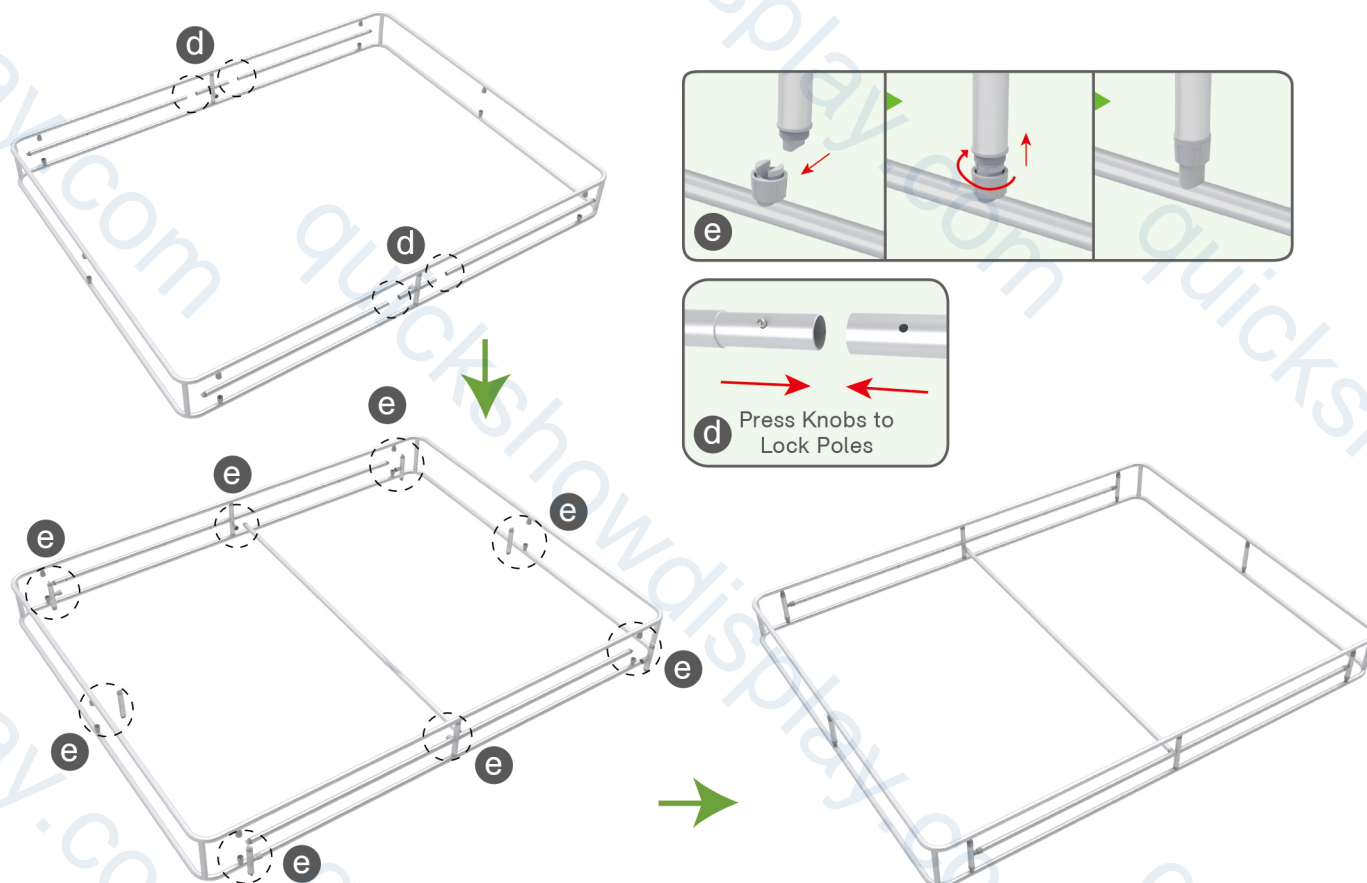


## STEPS

**STEP 03** Interconnect corner poles to make column frame according to labelings.

**STEP 04**

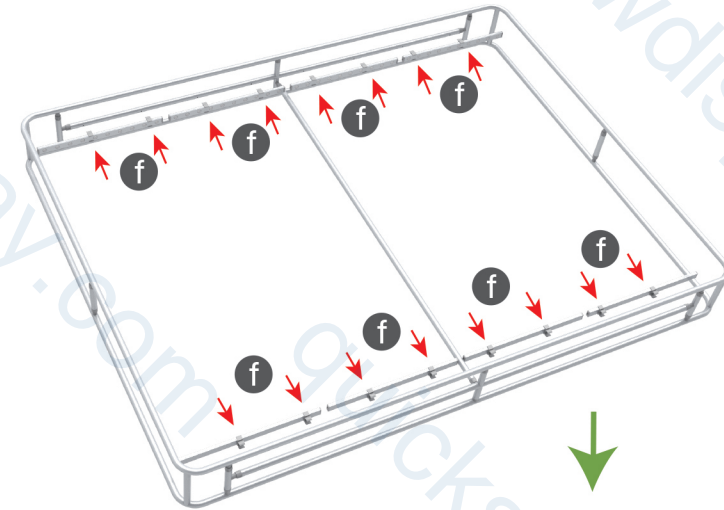
Connect long poles with corner poles according to labelings, connect support poles onto column frame.



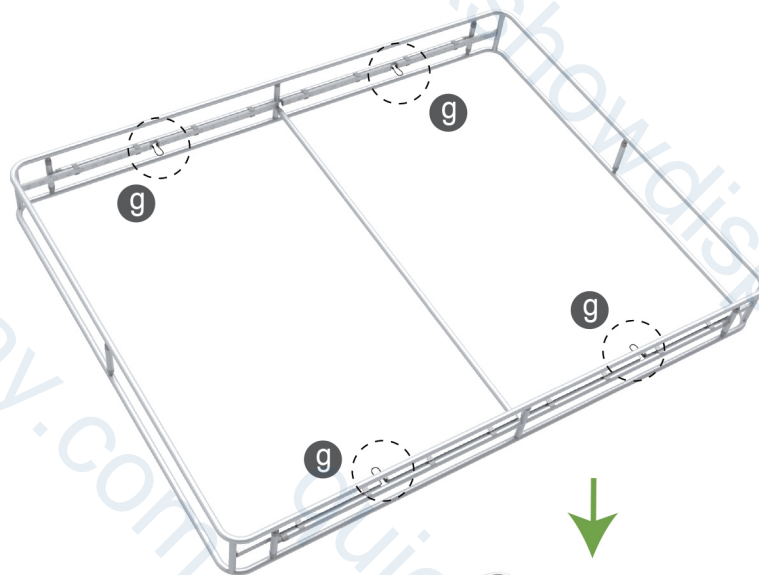
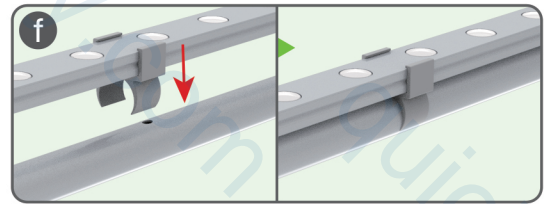
## STEPS

## STEP 05

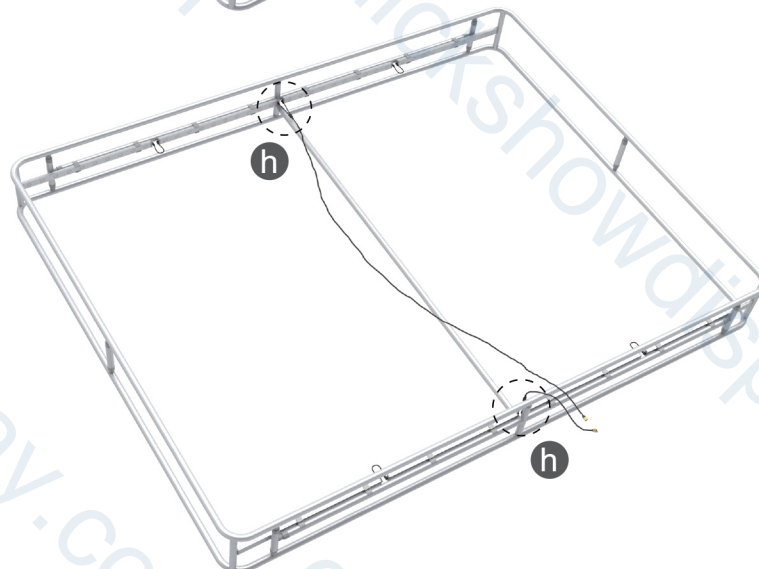
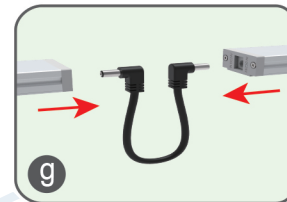
Install LED light bars & connect power wires.



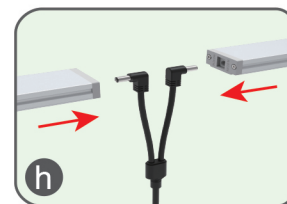
① Slide clips from LED light bars to align at holes of poles & press into.



② Connect 2 adjacent LED light bars in series with DC connection wire.

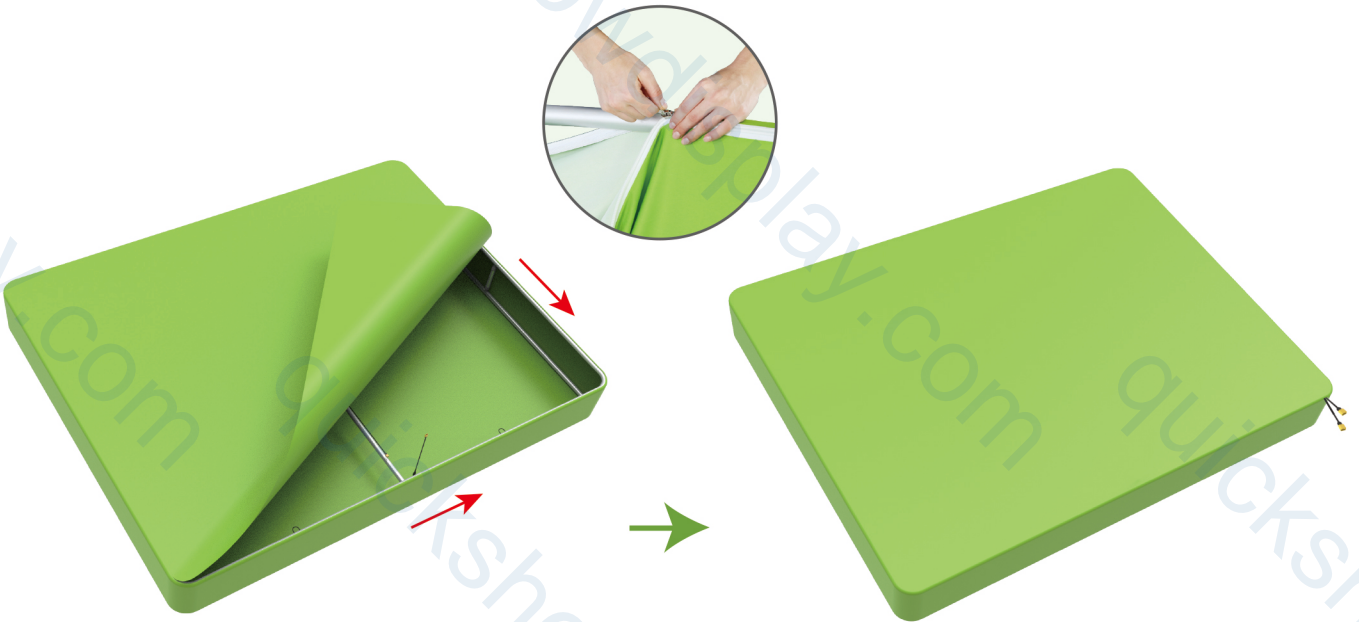


③ Connect those 2 adjacent LED light bars connected with Y-shaped connection wire, slightly adjust space between each LED light bar from 1" to 4".



## STEPS

**STEP 06** Wrap column frame with fabric banner & zip up at corner.

**STEP 07**

Connect Y-shaped connection wire's XT60 connector to switching power supply.

